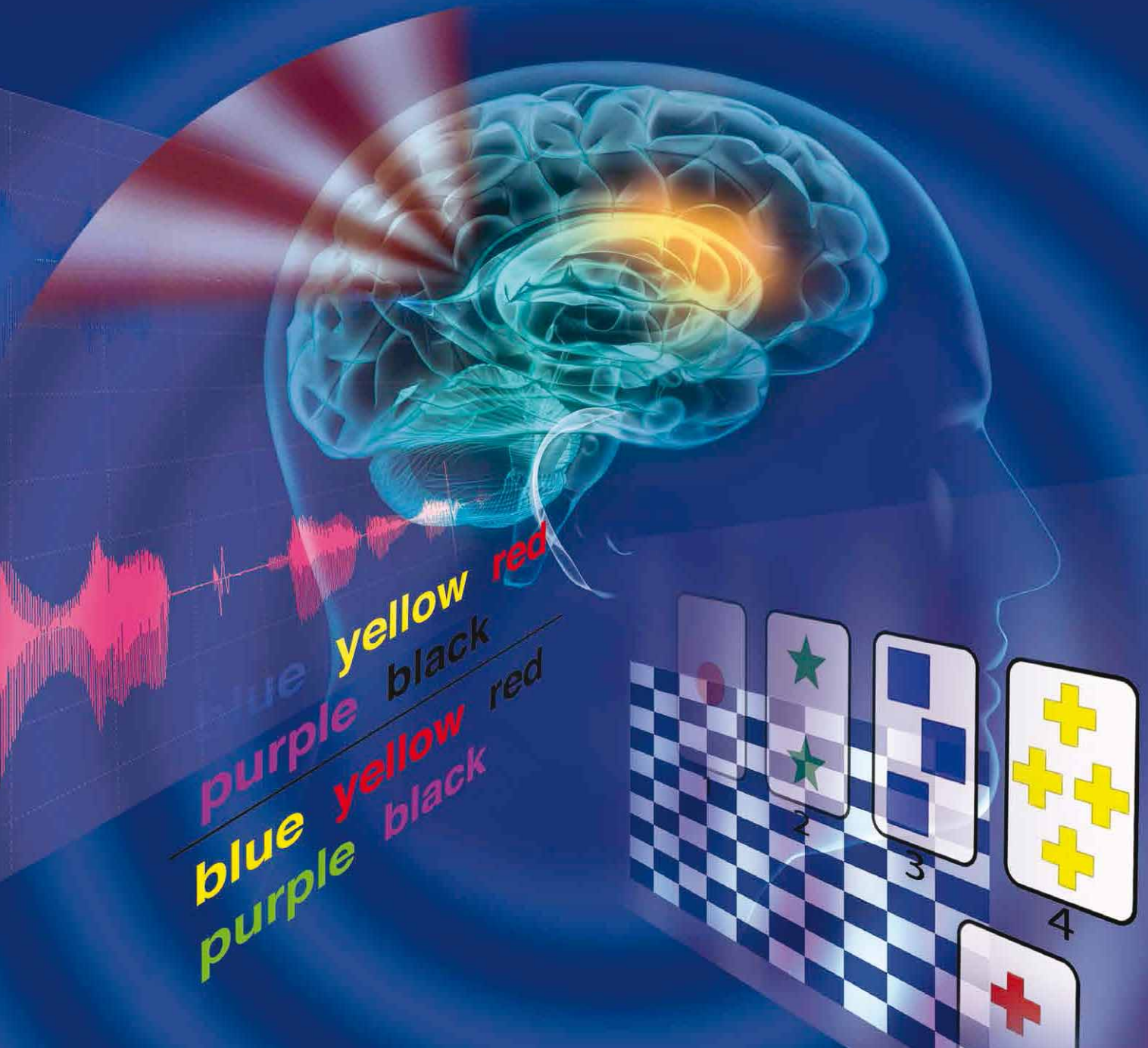


# <sup>TM</sup> STIM<sup>2</sup>

*STIM<sup>2</sup> Simple, Powerful, Accurate Stimulus Delivery  
and Experimental Control Solution.*

PRECISE STIMULUS PRESENTATION



blue yellow red  
purple black  
blue yellow red  
purple black

STIM<sup>2</sup> is designed to deliver scientific stimuli with all the quality our customers have come to expect from Neuroscan.

Operating under Windows<sup>®</sup> 7, STIM<sup>2</sup> provides a familiar and simple interface to design and deliver stimuli with ease and, more importantly, accuracy. STIM<sup>2</sup> provides complete control of the experiment, while delivering the highest quality stimuli.

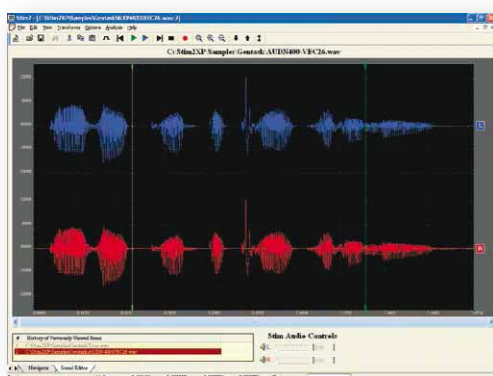
STIM<sup>2</sup> is a comprehensive stimulus presentation system consisting of a library of sensory, cognitive and neuropsychological tasks. It is a modern tool that provides well-defined and widely known paradigms that may be used as a stand-alone package, or integrated fully with the CURRY acquisition system, by providing synchronized trigger pulses. Whether the user's interests lie with basic sensorimotor and perceptual tasks, more complex recognition tasks, or the most sophisticated cognitive processes, STIM<sup>2</sup> can deliver the stimuli with the precision needed for accurate analysis.

STIM<sup>2</sup> is fully integrated with the Cedrus StimTracker. This system uses photocells and auditory threshold detection to identify stimulus onset with the greatest accuracy possible.

**Task Library** - Fourteen tasks are pre-programmed into the STIM<sup>2</sup> software to provide a task library to build upon. Each task allows the user to modify parameters, such as the duration, order of presentation, the interstimulus interval, performance feedback options, and many more. The programs are categorized into Motor, Perceptual, Attention, Memory, and Cognitive tasks. Some of the more common tasks include Finger Tapping, Stroop, Card Sorting, and Categories tasks from neuropsychology. Additional tasks include pattern reversal, Naming, Visual tracking, Spatial memory, Visual and Auditory continuous performance, Verbal learning, and Visual memory tasks.

**Task Generation** - Creating custom tasks with ease is the most important element in a stimulus program. The Gentask utility program provides an effective tool to create the user's own tasks with no programming skills required.

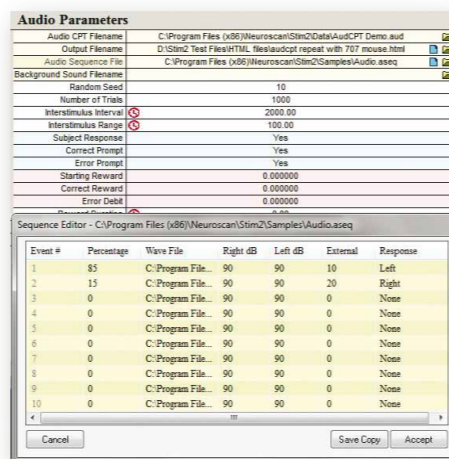
**Image and Sound Files** - Common audio files (including WAV and Neuroscan SND files) and video files (including JPG, BMP, PCX, PNG, TIF, CUT, etc., files) are easily presented. Users can create their own sounds using the Sound Editor and convert graphics file types to ones handled by STIM<sup>2</sup> using the Image Converter. Audio and visual stimuli can be presented simultaneously while having flexibility in the placement of the trigger pulse in relation to a stimulus.



Audio files may be created, reviewed and modified in the Sound Editor. Trigger placement is as easy as positioning the mouse cursor.



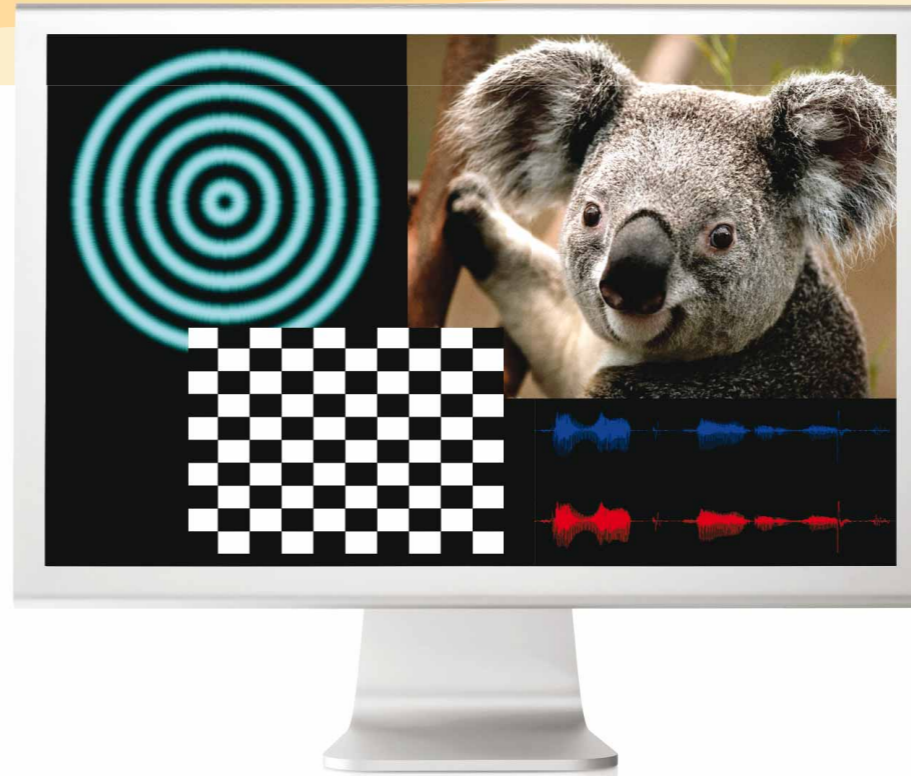
Principle categories of tasks.



Example of programmable parameters for an Auditory P300 paradigm.

Trial	Word	Color	Type	Response	Correct	Latency
1	1	3	2	-1	0	1000
2	1	4	2	-1	0	1000
3	3	2	2	-1	0	1000
4	2	4	2	-1	0	1000
5	4	3	2	-1	0	1000
6	1	4	2	-1	0	1000
7	3	3	1	1	0	394
8	0	0	1	0	0	0
9	2	1	2	-1	0	1000
10	1	2	2	-1	0	1000

Example of the behavioral results data file.

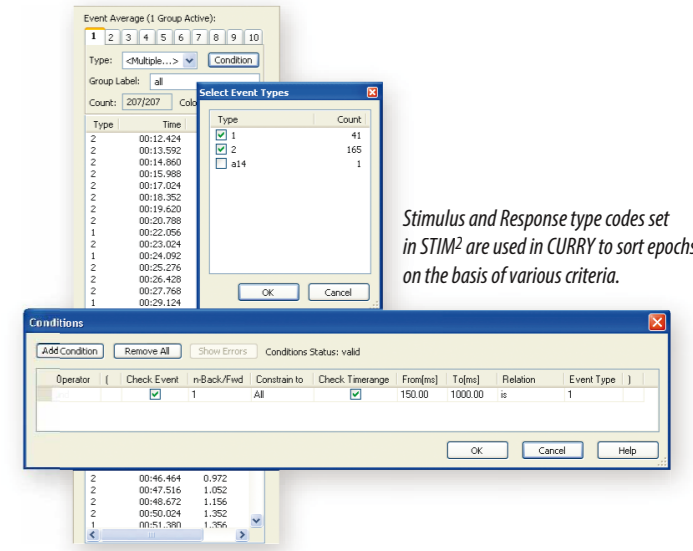


**Data Analysis** - Behavioral data (performance results) from the tasks are available for review in the Internet Browser, and the ASCII file versions of these files can be transferred to CURRY for integration with the EEG data files.

**Integration** - STIM<sup>2</sup> will integrate with other recording devices, allowing the user to trigger external devices (such as an SEP stimulator). The seamless integration with Neuroscan data acquisition products allow on-line averaging, sorted averages based on trial type, accuracy and latency of responses, and sequence recognition.

Label	Mode	Duration	Window	ITI	XPOS	YPOS	Response	Type	Filename
1	RESET	NC							
	CUT	100.00	1000.00	1500.00	250	0	2	2	C:\Program Files (x86)\Neuroscan\Stim2\Pictures\Cut ima
	MUTEON	100.00	1000.00	1500.00	250	0	2	2	C:\Program Files (x86)\Neuroscan\Stim2\Pictures\Cut ima
	NOISEOFF	100.00	1000.00	1500.00	250	0	2	2	C:\Program Files (x86)\Neuroscan\Stim2\Pictures\Cut ima
	NOISEON	100.00	1000.00	1500.00	-250	0	1	1	C:\Program Files (x86)\Neuroscan\Stim2\Pictures\Cut ima
	PAUSE	100.00	1000.00	1500.00	-250	0	1	1	C:\Program Files (x86)\Neuroscan\Stim2\Pictures\Cut ima
	PCX	100.00	1000.00	1500.00	250	0	2	2	C:\Program Files (x86)\Neuroscan\Stim2\Pictures\Cut ima
	RESET	100.00	1000.00	1500.00	250	0	2	2	C:\Program Files (x86)\Neuroscan\Stim2\Pictures\Cut ima
	RESP	100.00	1000.00	1500.00	-250	0	1	1	C:\Program Files (x86)\Neuroscan\Stim2\Pictures\Cut ima
	RETURN	100.00	1000.00	1500.00	-250	0	1	1	C:\Program Files (x86)\Neuroscan\Stim2\Pictures\Cut ima
	SND	100.00	1000.00	1500.00	250	0	2	2	C:\Program Files (x86)\Neuroscan\Stim2\Pictures\Cut ima
	CUT	100.00	1000.00	1500.00	250	0	2	2	C:\Program Files (x86)\Neuroscan\Stim2\Pictures\Cut ima
	CUT	100.00	1000.00	1500.00	250	0	2	2	C:\Program Files (x86)\Neuroscan\Stim2\Pictures\Cut ima
	IF	NC	7	10	GOSUB	200	GOSUB	100	
	GOTO	1							
100	CUT	1000.00	0.00	2500.00	0	0	-1	10	C:\Program Files (x86)\Neuroscan\Stim2\Pictures\Cut ima
	RETURN								

Example of an easily programmed file for controlling stimulus presentation.



Stimulus and Response type codes set in STIM<sup>2</sup> are used in CURRY to sort epochs on the basis of various criteria.

**Gentask Editor** - One of the most popular programs in STIM<sup>2</sup> is the Gentask Utility program, since it allows maximum control over stimulus presentation. The heart of Gentask is a "sequence file", a line-by-line program that governs many aspects of stimulus presentation. STIM<sup>2</sup> features a Gentask Editor that makes creating and modifying sequence files much easier.

In the sequence file, the user can set the duration of presentation, the time allowed for a valid response, the interval between stimuli, the position of the graphics file on the screen, the decibel levels for audio files (independent left and right channel settings), the correct

expected response, and the trigger type code sent to the acquisition system, for each stimulus that is presented. A drag-and-drop feature allows the user to add lines to the file with maximum ease. Additional options with the sequence file include flow control and conditional branching commands, counters, ways to build more complex stimuli, increasing/decreasing difficulty levels based on past performance, mask options, noise options, and many more.



STIM<sup>2</sup> is fully integrated with the Cedrus StimTracker to provide the most accurate timing possible.

## System Configurations

STIM<sup>2</sup> may be obtained in three configurations. The recommended option is the **STIM<sup>2</sup> Complete System**. This package comes with a computer that has been calibrated for SPL and audio and video timing. It includes a seven button response pad, ear insert headphones, an isolation transformer, and a Cedrus StimTracker unit that will achieve the best timing accuracy possible. The StimTracker is fully integrated with CURRY, allowing you to align stimulus events with the more precise events from the StimTracker.

The dB level of the sound files can be controlled by the software, and the user has the option to use the mouse, keyboard, or the seven-button response pad as the subject response device. STIM<sup>2</sup> will send precisely timed trigger pulses to the CURRY acquisition system and these will appear as trigger type codes in the continuous data file.

The second STIM<sup>2</sup> variation is the **STIM<sup>2</sup> with Hardware** option.

This is like the STIM<sup>2</sup> Complete system, except the computer is not supplied. The StimTracker is not included, but it may be ordered as an add-on. The disadvantage of this system is that it is not calibrated for dB level or timing. It is possible to perform the sound calibration yourself (with a dB meter and special coupler). Timing is dependent on Windows 7, which is improved with the StimTracker.

The third variation is the **STIM<sup>2</sup> Software Only** version. It is up to the user to provide the computer, headphones, response pad, etc. Calibration is left to the user. The StimTracker may be purchased as an add-on.

## Timing and Accuracy Specifications

### AUDIO TIMING

- Trigger to audio onset reliability  $\pm 5$ ms (Software Only, parallel port)  
onset reliability  $\pm 1$  sample (with StimTracker)

### VIDEO TIMING

- Trigger to video onset reliability  $\pm 1$ ms

## STIM<sup>2</sup> Complete

### AUDIO

- Noise 106dB SNR
- Resolution 24 bits
- Rate 192 kHz
- SPL 0-120dB with .75dB steps independent left/right channel control

### VIDEO

- 1GB RAM Minimum
- Dual monitor support
- To available refresh rate of system
- Minimum resolution 1024 x 768 higher resolution graphics card dependent
- Built in hardware acceleration with Microsoft®DirectX™ Support

### RESPONSE DEVICE

- Keyboard, Mouse & 7-button hardware latched response pad

## STIM<sup>2</sup> Software Only

### AUDIO

- Dependent on user's hardware\*

### VIDEO

- Dependent on user's hardware\*

### RESPONSE DEVICE

- Keyboard, Mouse & 7-button hardware latched response pad

\*Neuroscan cannot guarantee timing with end-user supplied hardware.



All specifications are subject to change without notice. Please contact your Compumedics representative for latest technical information, pricing and product availability. Compumedics Profusion EEG5 Compumedics Profusion Nexus, Compumedics Neuroscan, Compumedics Sleep, Compumedics Neuroscience, Compumedics DWL, Compumedics Neuromedical Supplies, Neuro, SOURCE and CURRY are all trademarks of Compumedics. COMPUMEDICS and the Compumedics logo are registered trademarks of Compumedics.



### For more information please contact:

Compumedics Limited, Australia:  
30-40 Flockhart Street  
Abbotsford VIC 3067  
Australia  
Tel: +61 3 8420 7300  
Fax: +61 3 8420 7399  
Free Call: 1800 651 751

Compumedics USA, Inc.:  
6605 West WT Harris Blvd, Suite F  
Charlotte, NC 28269  
Toll Free: +1 877 717 3975  
Tel: +1 704 749 3200  
Fax: +1 704 749 3299

Compumedics Germany GmbH:  
Josef-Schüttler-Staße 2  
D-78224 Singen  
Germany  
Tel: +49 (0) 7731 79 76 9-0  
Fax: +49 (0) 7731 79 76 9-99

[www.compumedicsneuroscan.com](http://www.compumedicsneuroscan.com)  
[www.compumedics.com](http://www.compumedics.com)

